

# ENCLAVE®

## Flowable Fungicide



ENCLAVE is a broad-spectrum fungicide, which has been university tested, and provides outstanding prevention and control of most major fungal diseases in turf and ornamentals. This synergistic formulation provides quad action protection, enhanced performance and turf quality. ENCLAVE's multiple modes of activity also reduce the probability of resistance development.

### Features & Benefits

- Synergistic Combination Chemistry®
- For use on golf courses, landscape ornamentals, nursery, professional sports turf, greenhouses
- Disease resistance management provides four modes of action
- Economical with outstanding performance and great value compared to other fungicides

### Broad-spectrum disease control

(see label for additional diseases)

TURF DISEASES



Anthracnose



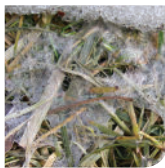
Brown Patch



Dollar Spot



Pink Snow Mold



Gray Snow Mold



Summer Patch

ORNAMENTAL DISEASES



Anthracnose



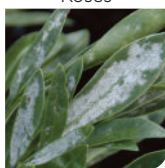
Black Spot on  
Roses



Blights



Leaf Spots



Powdery Mildew



Scabs

### Active Ingredients

Chlorothalonil 28.7%

Iprodione 9.4%

Thiophanate methyl 9.4%

Tebuconazole 2.8%

### Packaging

2 x 2.5 gal convenient packaging

### Application Rates

Apply 3 to 8 oz. per 1,000 sq. ft. on turf

Apply 32 to 44 oz. per 100 gallons on ornamentals

(See label for specific uses and rates.)

### Mode of Action

Group 1,2,3,M. Making ENCLAVE a very powerful product with broad-spectrum control of a very wide fungal pathogens

**QUALI-PRO**